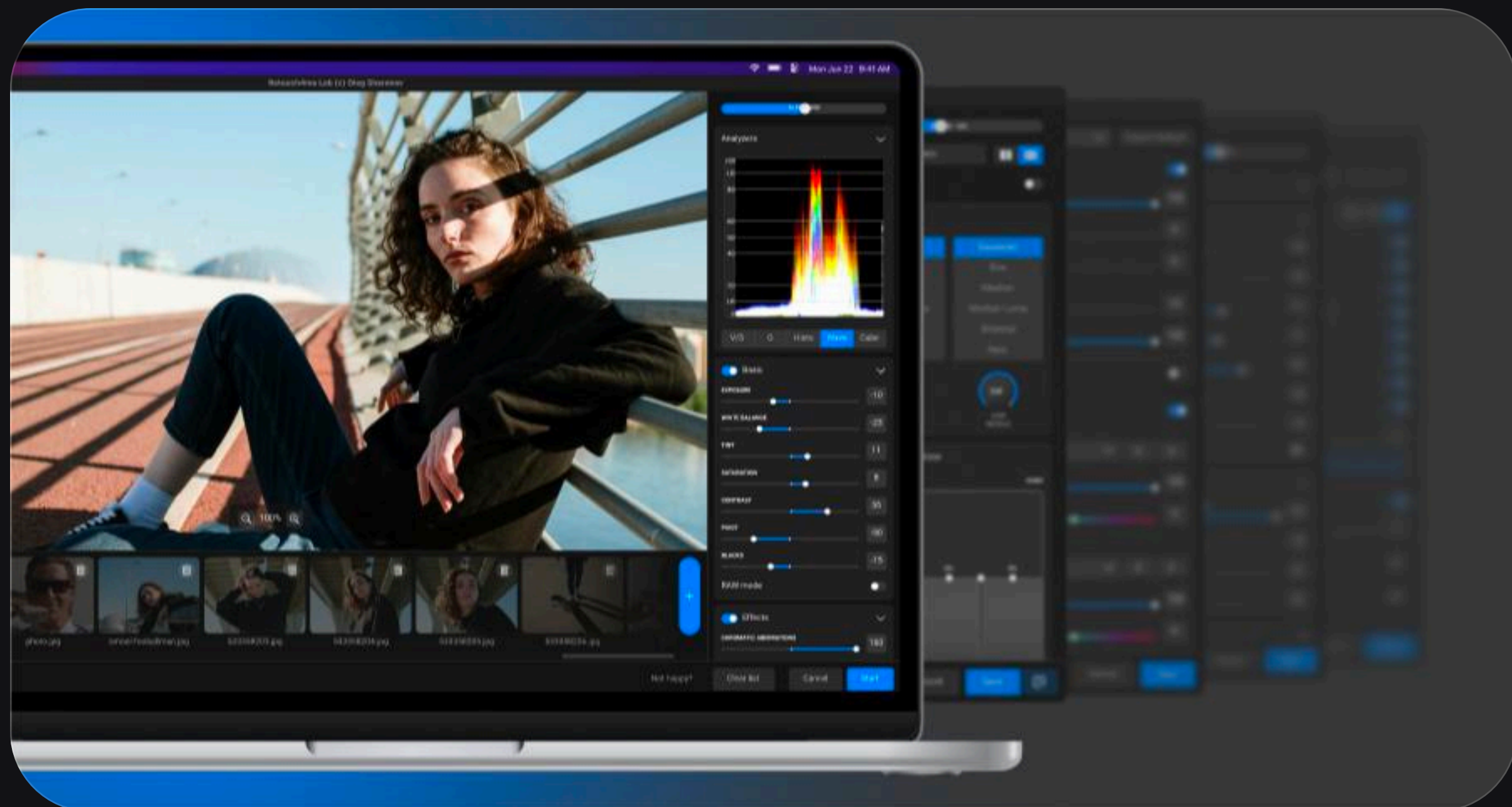




# Get started with Retouch4me



## AI Retouching Guide





Retouching takes time.  
AI speeds it up — without  
sacrificing quality.

It handles routine work, so you  
can focus on lighting,  
storytelling, and final polish.



Retouch4me is built  
by photographers,  
for photographers.

It's not about filters or effects,  
it's about clean, natural  
results, fast.



We trained our neural  
networks on thousands of real  
portraits to recognize skin,  
facial structure, lighting, and  
typical issues like blemishes,  
redness, and shine.



AI retouching isn't magic,  
it's smart automation.

You stay in control, but the  
heavy processing happens  
in seconds.



# How does AI retouching work?

AI uses neural networks — systems trained on real images to recognize and improve skin texture, color, contrast, facial structure, and more.

Instead of applying a fixed action or filter, it adjusts to the specific photo, lighting, and subject. For example: it won't smooth shadows or highlights equally, it knows where to keep detail and where to soften.



## What makes it useful

- Works consistently across many images
- Learns from real portrait data
- Doesn't rely on sliders or masks



## What it doesn't do

- It doesn't guess, it calculates.

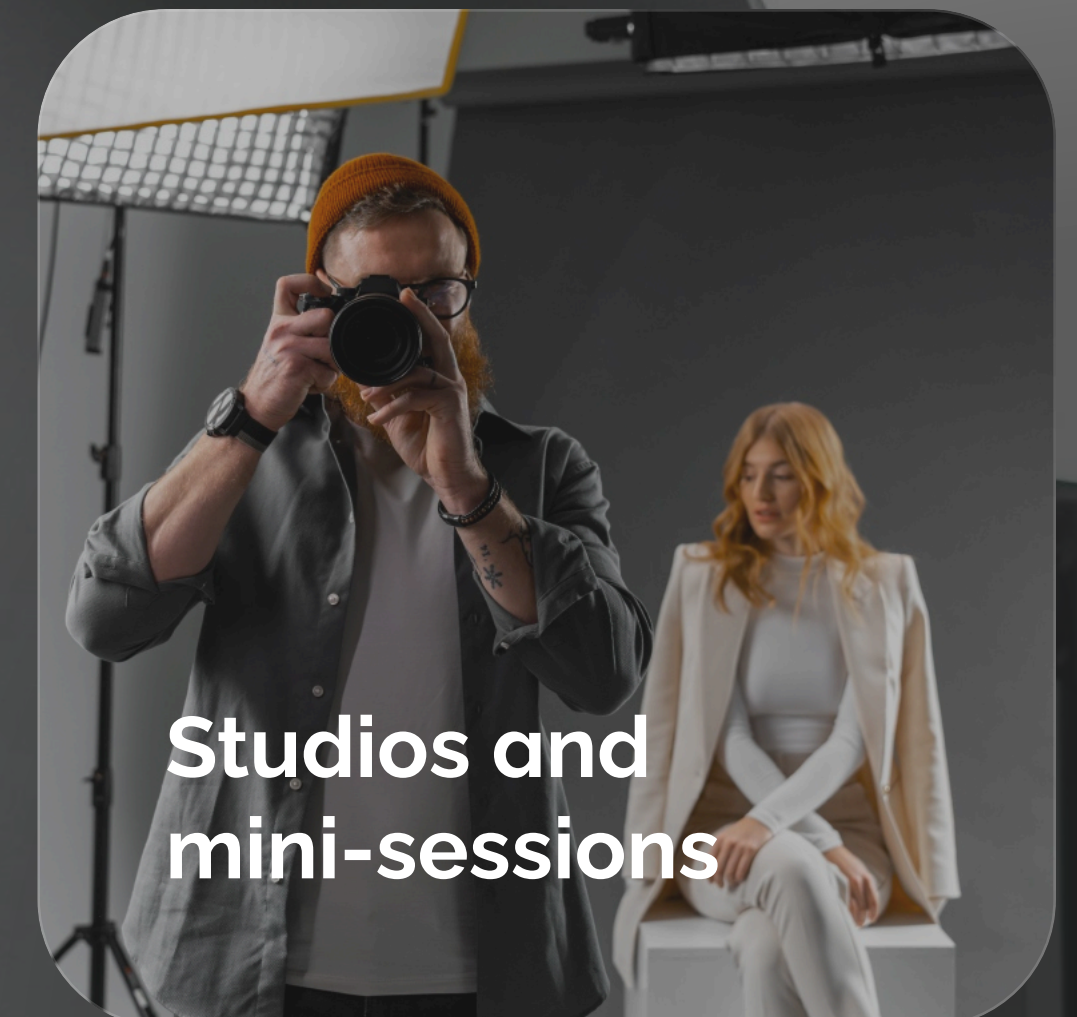
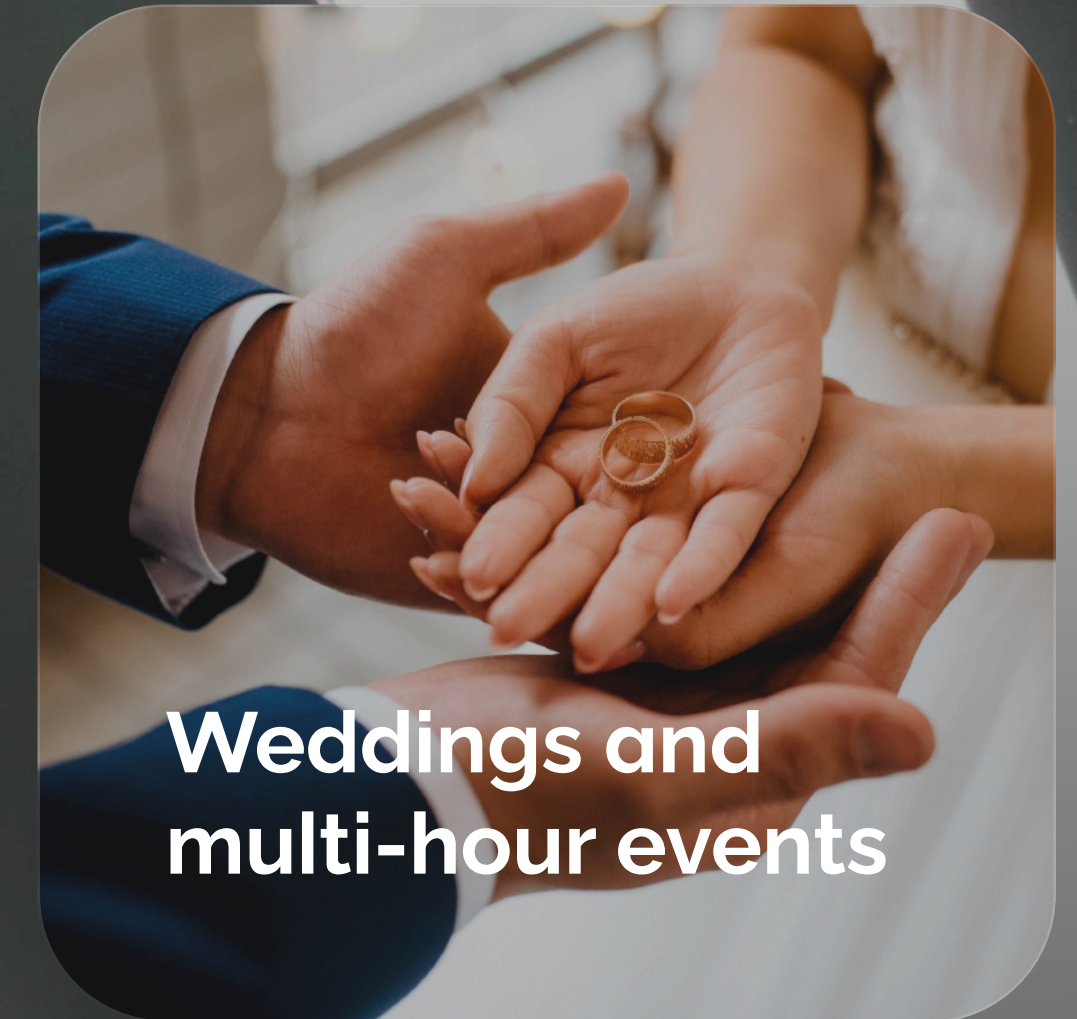
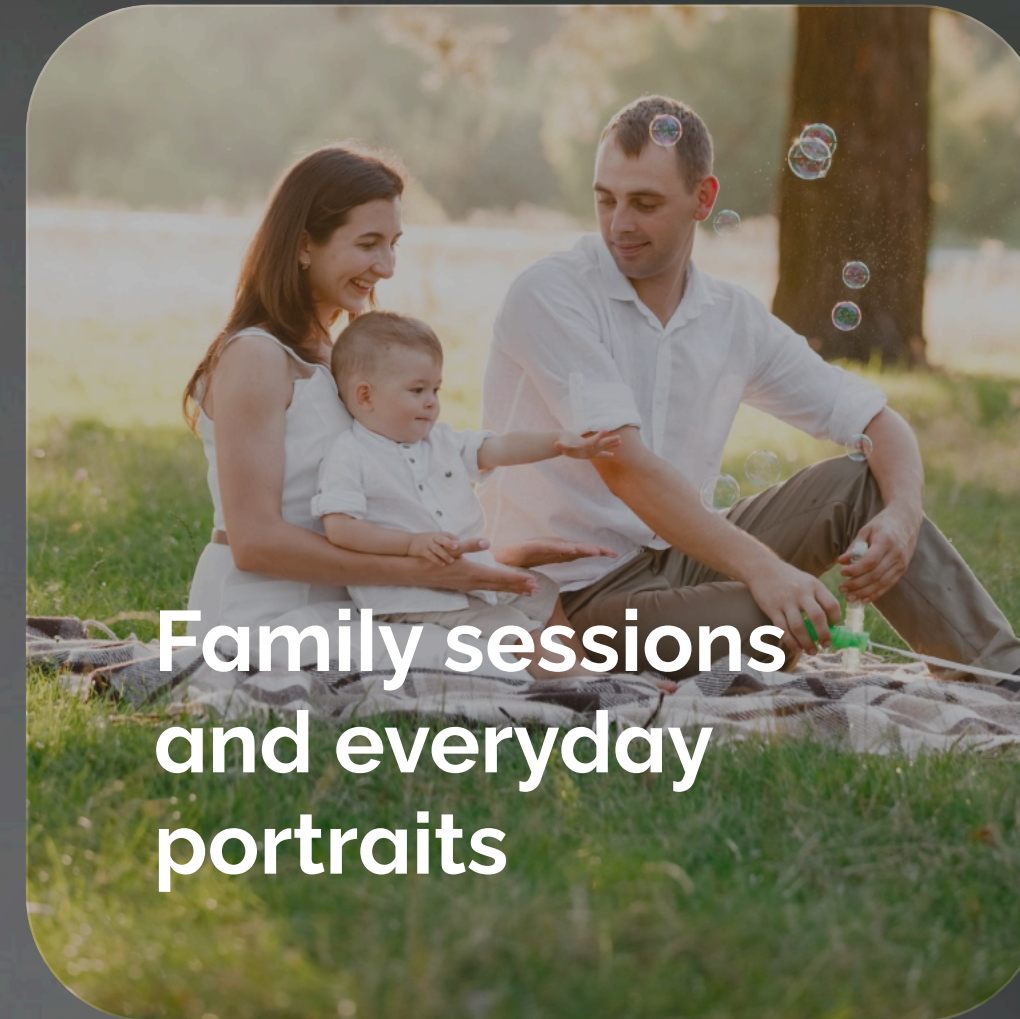
So yes, you still need to review and adjust. But most of the time, you'll need far fewer manual edits.

# When to use AI retouching?

## First-pass cleanup before manual detail work

✓ **With AI:**  
~2 mins + optional tweaks

✗ **Manual:**  
~30 mins per photo



# Retouch4me tools

Pro tip: don't overdo it, keep texture and volume natural.  
Use sliders with intention and preserve natural look.



## Heal

Removes acne and skin imperfections



## Dodge & Burn

Automatically adjusts highlights and shadows



## Portrait Volumes

Enhances depth and facial structure



## Skin Tone

Balances and evens out skin tones



## Eyes Bundle

Removes redness, adds clarity and sharpness of the eyes



## White Teeth

Naturally whitens teeth without an artificial effect



## Mattifier

Eliminates oily skin shine



## Face Make

AI-powered facial enhancement



## Fabric

Detects clothing in the photo and smoothes out creases and wrinkles.



## Clean Backdrop

Cleans up uneven studio backgrounds.



## Dust

Removes dust and small particles.



## Color Match

Matches colors between different images.



## Skin Mask

Automatically selects skin areas for targeted retouching



## Frequency Separation

Classic method for advanced users.



## Photo ID Retouch

Matches colors between different images.



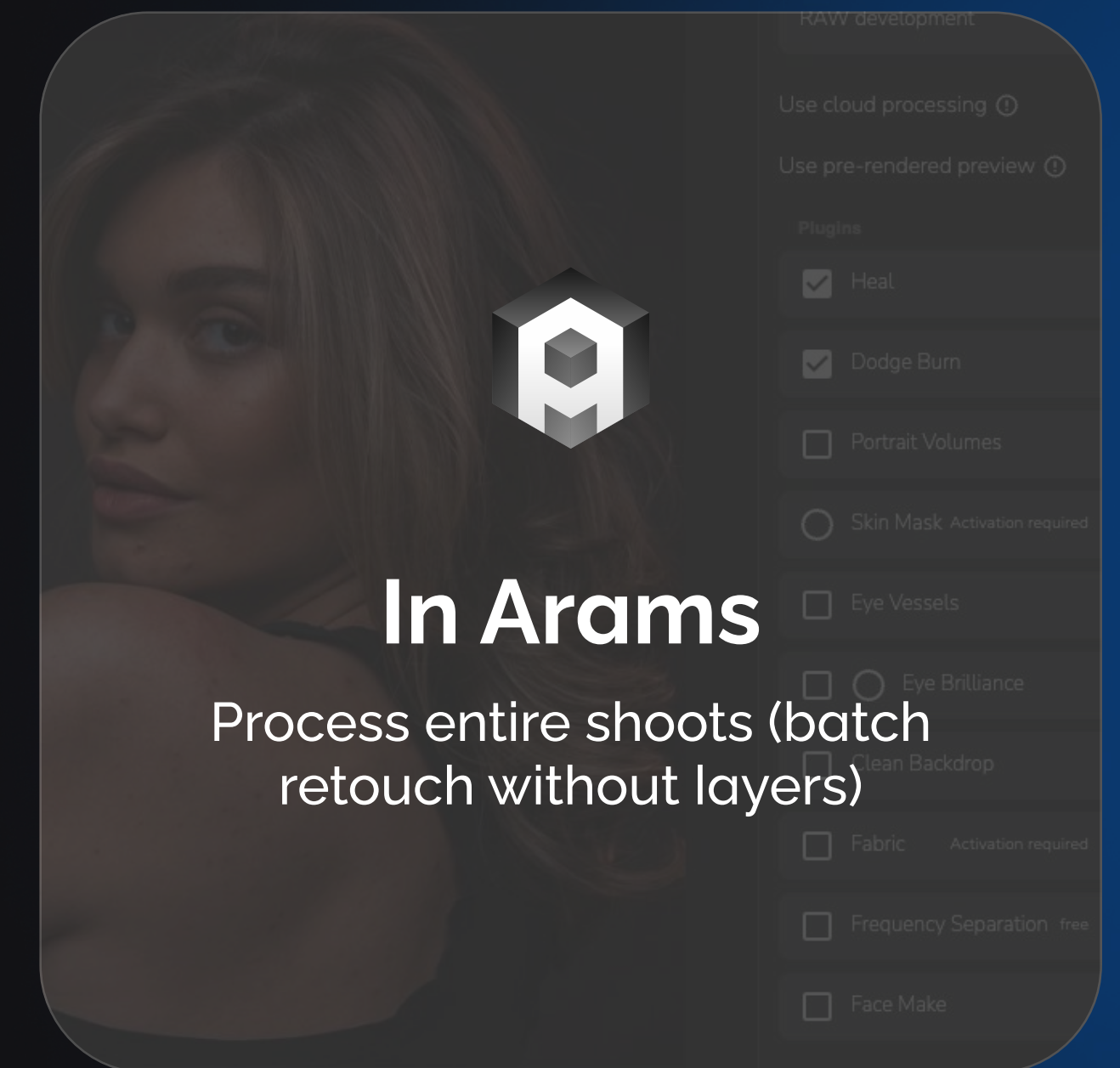
## Color Match Free

Matches colors between different images.

# How to integrate AI into your workflow

Save presets and apply them in 1 click

Combine with manual editing if needed



Usual flow



# Common questions

Will AI replace retouchers?

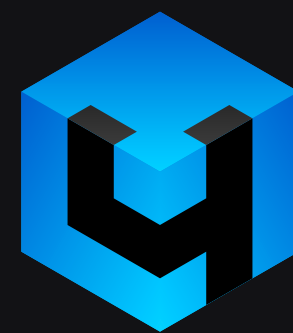
No, it helps with routine work. Taste and detail still matter.

Can AI go too far?

Yes, but you control the intensity.

Is it safe for client work?

Yes. Always review results, just like with manual edits.



**Start simple.**  
**Try Retouch4me tools**  
**on your own photos.**

[Get a free trial](#)